

DIMENSIONS FOR OVERALL HEIGHT AND LENGTH ARE APPROXIMATE

OVERALL HEIGHT = 102.5"
OVERALL WIDTH WITH RUB
RAILS & FENDERETTES = 95"

(7) WHELEN 600 SUPER LED WITH CLEAR LENSES
RED / RED / RED / WHITE / RED / RED / RED

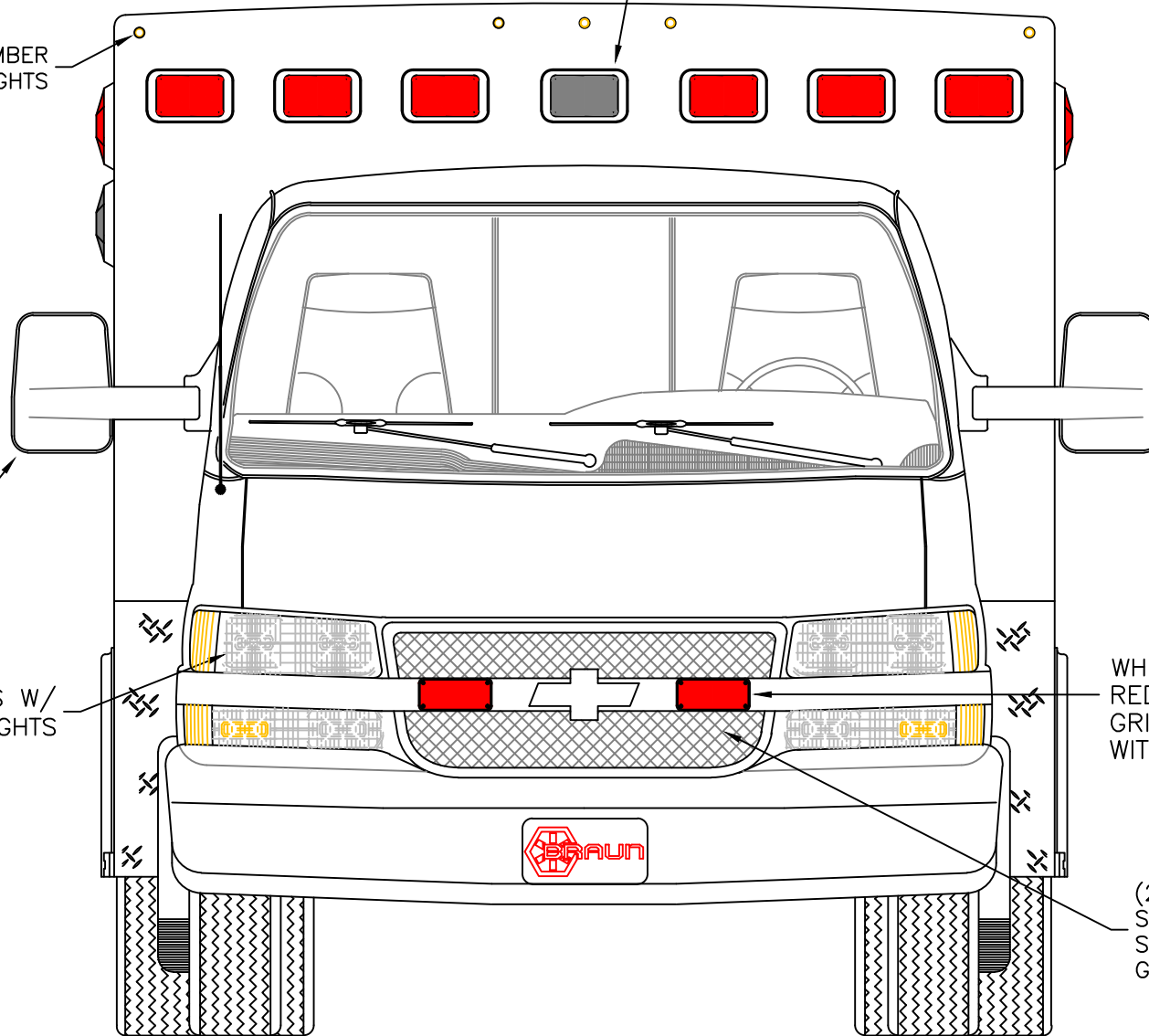
(5) TECNIQ S330 AMBER
MINI-LED MARKER LIGHTS

VELVAC 2020XG
HEATED/REMOTE
MIRRORS

FLASHING HEADLIGHTS W/
DAYTIME RUNNING LIGHTS

WHELEN 700 SERIES
RED SUPER LED
GRILLE LIGHTS
WITH CLEAR LENSES

(2) WHELEN SA315
SERIES SIREN
SPEAKERS BEHIND
GRILLE AREA



THIS DRAWING IS FOR REPRESENTATIONAL PURPOSES ONLY. DETAILS ARE CONCEPTUAL AND ARE SUBJECT TO CHANGE DURING DESIGN AND CONSTRUCTION
DIMENSIONS ARE APPROXIMATE UNLESS NOTED OTHERWISE TO MEET A SPECIFIC CUSTOMER NEED.

BRAUN
EXPRESS



2019 FRONT EXTERIOR VIEW
EXPRESS-III/G-3500 GAS CHASSIS

DATE:
8-3-18

DRAWING NO.

DWG. AAB
REV. NR

EXPRESS-1

APPROVAL SIGNATURE:

DATE:

DIMENSIONS FOR OVERALL HEIGHT AND LENGTH ARE APPROXIMATE
 OVERALL HEIGHT = 102.5"
 OVERALL WIDTH WITH RUB
 RAILS & FENDERETTES = 95"

(5) WHELEN 600 SUPER LED WARNING LIGHTS WITH CLEAR LENSES,
 (2) WHELEN 600 CLEAR LED LOAD LIGHTS:
 RED / RED / LOAD / AMBER / LOAD / RED / RED

(5) TECNIQ S330 RED
 MINI-LED MARKER LIGHTS

EXHAUST VENT

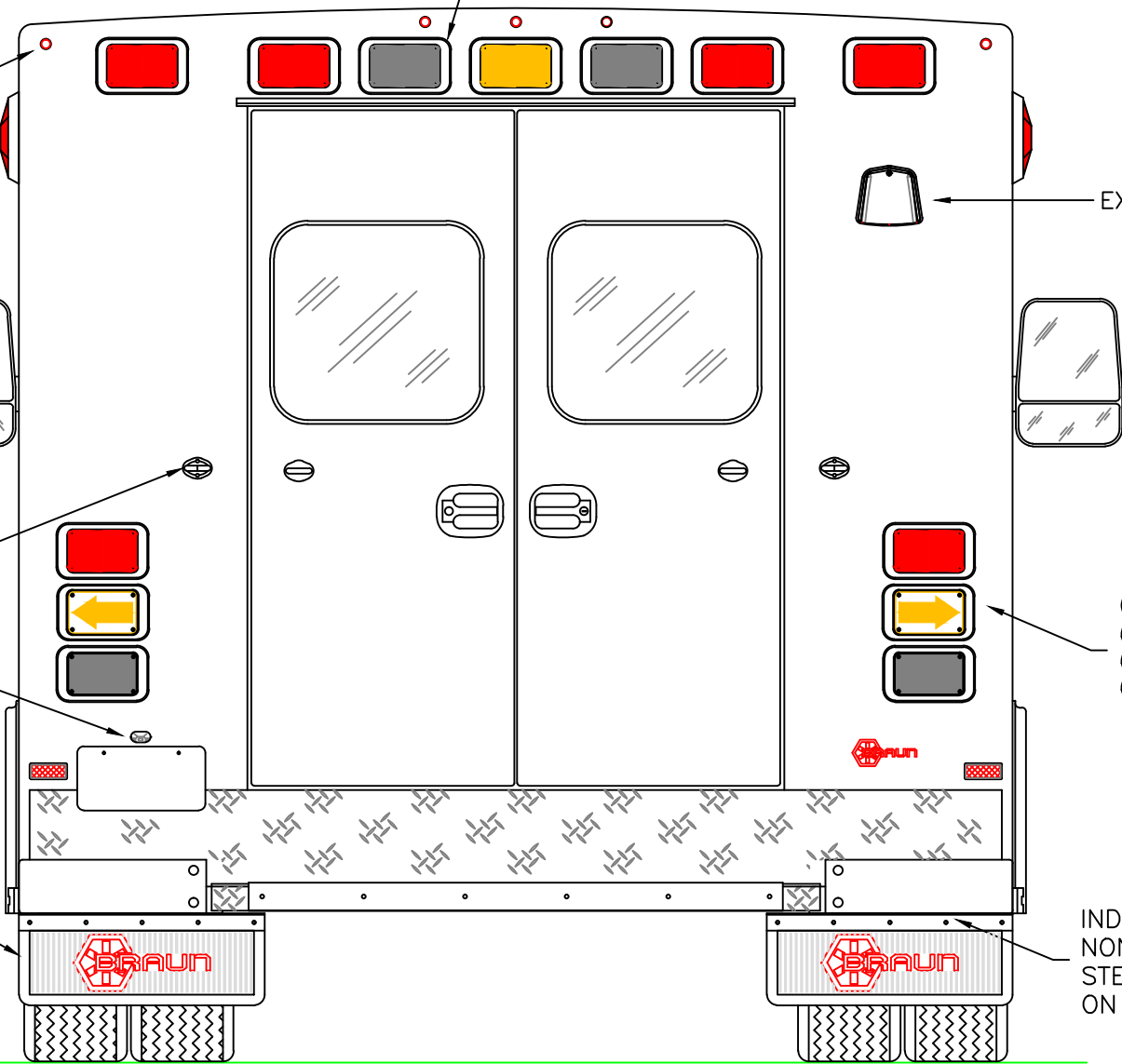
LOCATION FOR
 DOOR GRABBERS

(1) EACH SIDE, WHELEN
 600 LED BRAKE/TAIL,
 600 LED TURN,
 600 LED BACK-UP

LED LICENSE
 PLATE LIGHT

MUD FLAPS

INDEPENDENT BUMPER WITH
 NON-SKID FLIP-UP CENTER
 STEP AND COT PROTECTOR
 ON STEP EDGE



THIS DRAWING IS FOR REPRESENTATIONAL PURPOSES ONLY. DETAILS ARE CONCEPTUAL AND ARE SUBJECT TO CHANGE DURING DESIGN AND CONSTRUCTION
 DIMENSIONS ARE APPROXIMATE UNLESS NOTED OTHERWISE TO MEET A SPECIFIC CUSTOMER NEED.

BRAUN
 EXPRESS



2019 REAR EXTERIOR VIEW
 EXPRESS-III

DATE:
 8-3-18

DWG. AAB REV. NR

DRAWING NO.

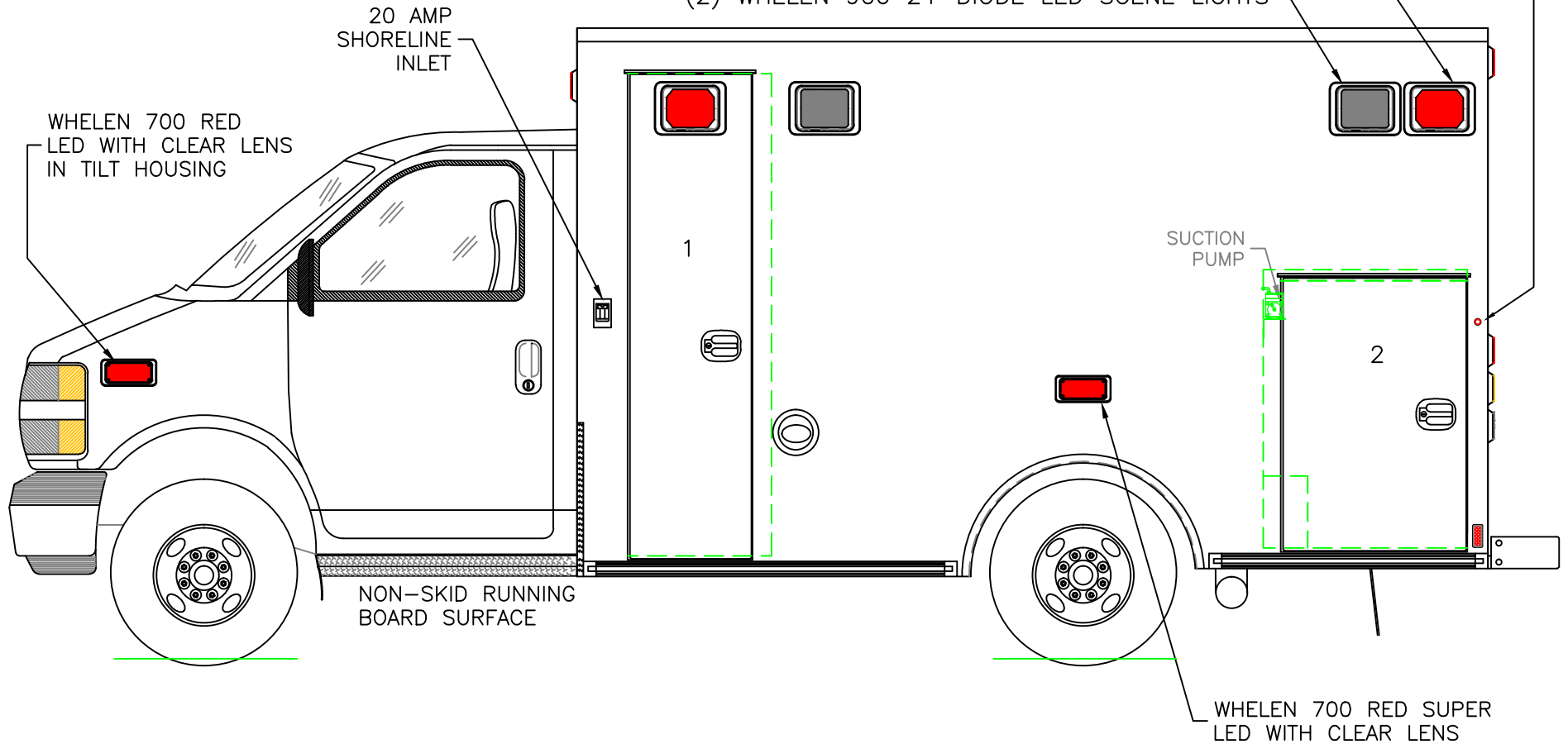
EXPRESS-2

DIMENSIONS FOR OVERALL HEIGHT AND LENGTH ARE APPROXIMATE
 OVERALL HEIGHT = 102.5"
 OVERALL LENGTH = 254"
 MODULE LENGTH = 144"

TECNIQ S330 RED MINI-LED MARKER LIGHT TO ALSO FLASH WITH TURN SIGNAL

(2) WHELEN 900 RED SUPER LED WARNING LIGHTS WITH CLEAR LENSES

(2) WHELEN 900 24-DIODE LED SCENE LIGHTS



COMPARTMENT

O.S.S #1

CLEAR OPENING: 75.25h x 16.00w
 INSIDE DIMS: 76.25h x 22.75w x 18.50d
 BACKBOARD/SCOOP STORAGE

O.S.S #2

CLEAR OPENING: 42.25h x 26.00w
 INSIDE DIM'S.: 44.00h x 32.25w x 18.50d

THIS DRAWING IS FOR REPRESENTATIONAL PURPOSES ONLY. DETAILS ARE CONCEPTUAL AND ARE SUBJECT TO CHANGE DURING DESIGN AND CONSTRUCTION
 DIMENSIONS ARE APPROXIMATE UNLESS NOTED OTHERWISE TO MEET A SPECIFIC CUSTOMER NEED.

BRAUN
EXPRESS



2019 STREETSIDE EXTERIOR VIEW
 EXPRESS-III/G-3500 GAS CHASSIS

DATE:
8-3-18

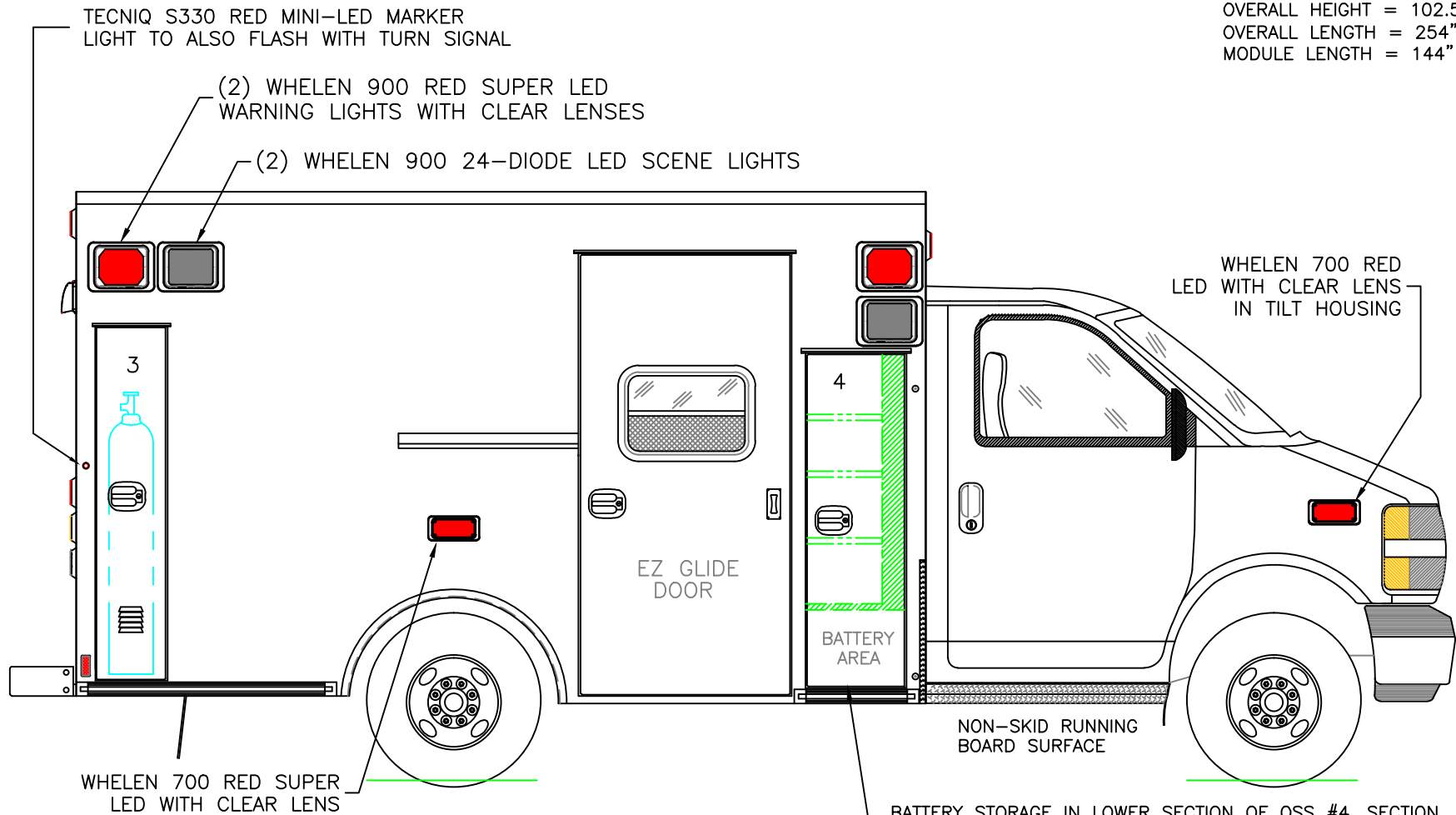
DWG.
AAB

REV.
NR

DRAWING NO.

EXPRESS-3

DIMENSIONS FOR OVERALL HEIGHT AND LENGTH ARE APPROXIMATE
 OVERALL HEIGHT = 102.5"
 OVERALL LENGTH = 254"
 MODULE LENGTH = 144"



WHELEN 700 RED SUPER LED WITH CLEAR LENS

BATTERY STORAGE IN LOWER SECTION OF OSS #4. SECTION TO BE SEALED AGAINST THE DOOR WHEN THE DOOR IS CLOSED. (1) BATTERY UNDER HOOD AND (1) IN #4 ON A SLIDE-OUT TRAY.

O.S.S #3
 CLEAR OPENING: 58.50h x 9.50w
 INSIDE DIM'S.: 59.25h x 12.00w x 15.00d
 OXYGEN COMPARTMENT FOR "M" OR "H" CYLINDER

O.S.S #4
 CLEAR OPENING: 54.75h x 15.50w
 INSIDE DIM'S.: SEE PARTITION INTERIOR VIEW
 INSIDE/OUTSIDE ACCESS

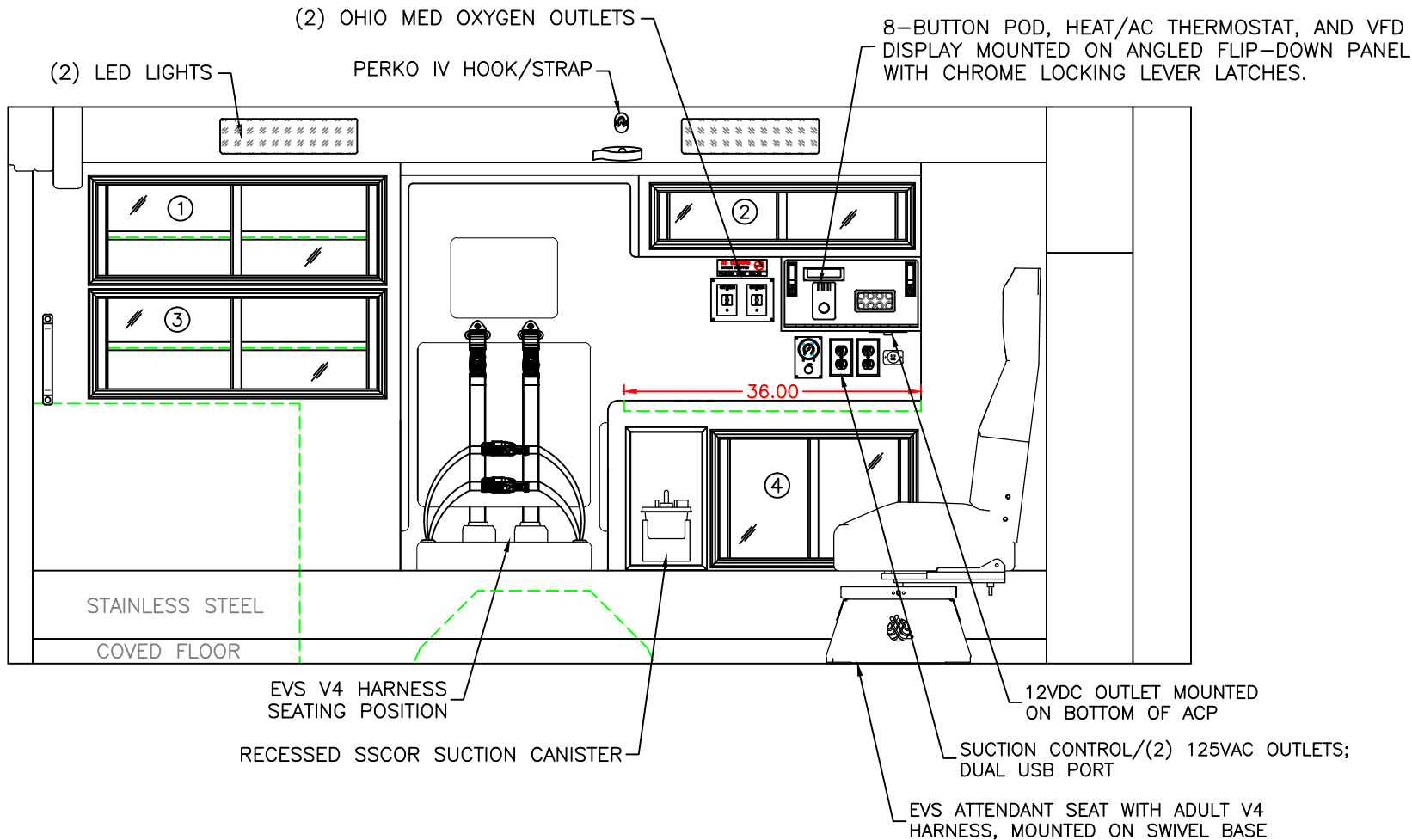
THIS DRAWING IS FOR REPRESENTATIONAL PURPOSES ONLY. DETAILS ARE CONCEPTUAL AND ARE SUBJECT TO CHANGE DURING DESIGN AND CONSTRUCTION DIMENSIONS ARE APPROXIMATE UNLESS NOTED OTHERWISE TO MEET A SPECIFIC CUSTOMER NEED.

BRAUN EXPRESS



2019 CURBSIDE EXTERIOR VIEW
 EXPRESS-III/G-3500 GAS CHASSIS

DATE: 8-3-18	DRAWING NO. EXPRESS-4
DWG. AAB	REV. NR



COMPARTMENT:

- #1 DOOR OPENING: 11.00h x 34.00w
 INSIDE DIMS: 12.50h x 35.75w x 16.25d
 (1) ADJUSTABLE SHELF
 SLIDING POLYCARBONATE DOORS
 TOTAL CABINET WEIGHT RATING = 25 lbs.
- #2 DOOR OPENING: 5.75h x 30.00w
 INSIDE DIMS: 8.50h x 31.75w x 15.00d
 SLIDING POLYCARBONATE DOORS
 TOTAL CABINET WEIGHT RATING = 15 lbs.

- #3 DOOR OPENING: 11.00h x 34.00w
 INSIDE DIMS: 12.50h x 35.75w x 16.25d
 (1) ADJUSTABLE SHELF
 SLIDING POLYCARBONATE DOORS
 TOTAL CABINET WEIGHT RATING = 25 lbs.
- #4 DOOR OPENING: 14.50h x 23.00w
 INSIDE DIMS: 16.00h x 24.50w x 16.25d
 SLIDING POLYCARBONATE DOORS
 TOTAL CABINET WEIGHT RATING = 20 lbs.

CABINETS TO BE ALUMINUM

THIS DRAWING IS FOR REPRESENTATIONAL PURPOSES ONLY. DETAILS ARE CONCEPTUAL AND ARE SUBJECT TO CHANGE DURING DESIGN AND CONSTRUCTION DIMENSIONS ARE APPROXIMATE UNLESS NOTED OTHERWISE TO MEET A SPECIFIC CUSTOMER NEED.

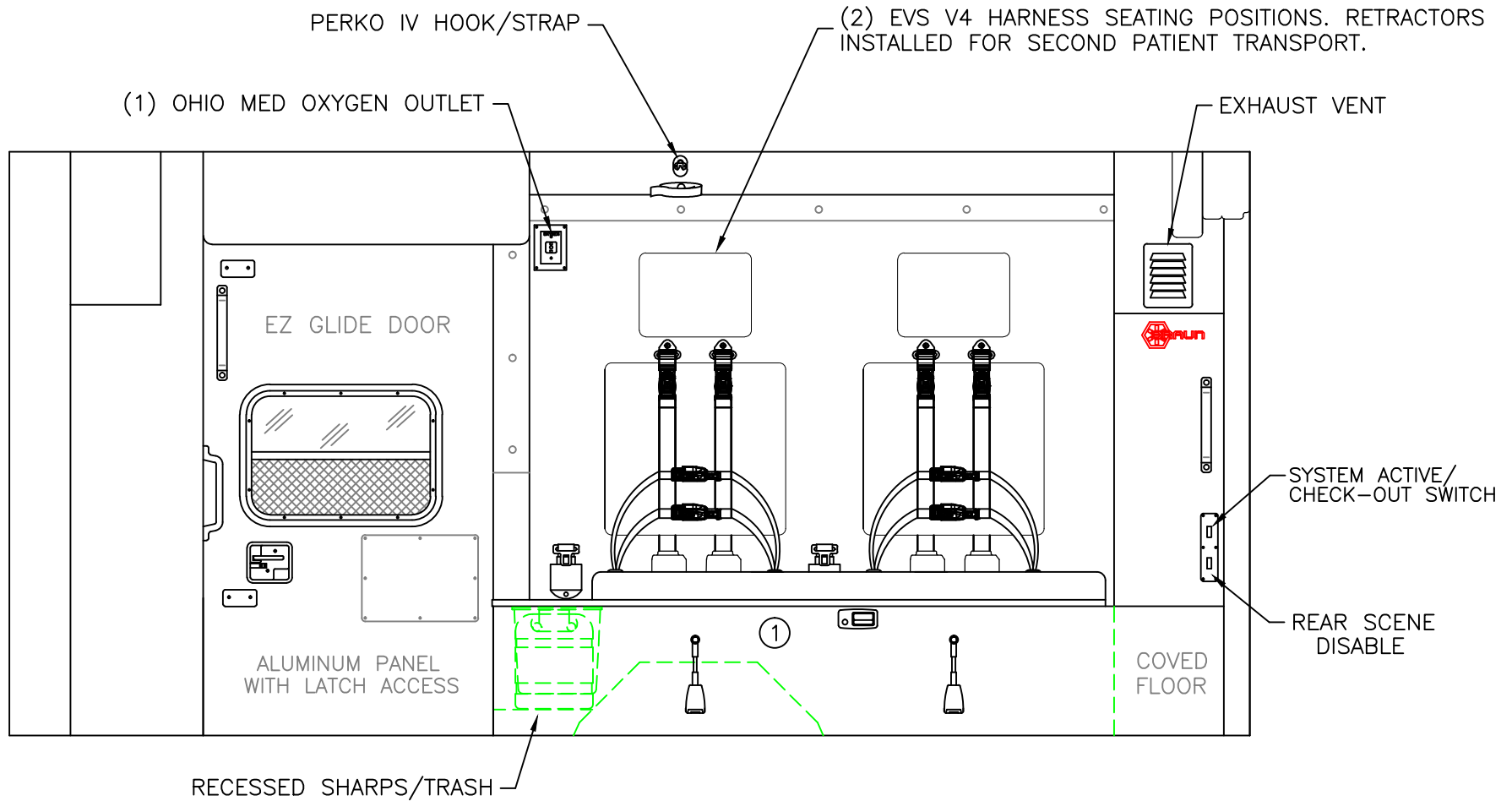
BRAUN
EXPRESS



2019 STREETSIDE INTERIOR
EXPRESS-III

DATE: 8-3-18	DWG. AAB	REV. NR
-----------------	-------------	------------

DRAWING NO.
EXPRESS-5



COMPARTMENT
 #1 INSIDE DIMS: 15.50h x 72.00w x 18.50d

CABINETS TO BE ALUMINUM

THIS DRAWING IS FOR REPRESENTATIONAL PURPOSES ONLY. DETAILS ARE CONCEPTUAL AND ARE SUBJECT TO CHANGE DURING DESIGN AND CONSTRUCTION
 DIMENSIONS ARE APPROXIMATE UNLESS NOTED OTHERWISE TO MEET A SPECIFIC CUSTOMER NEED.

BRAUN
 EXPRESS

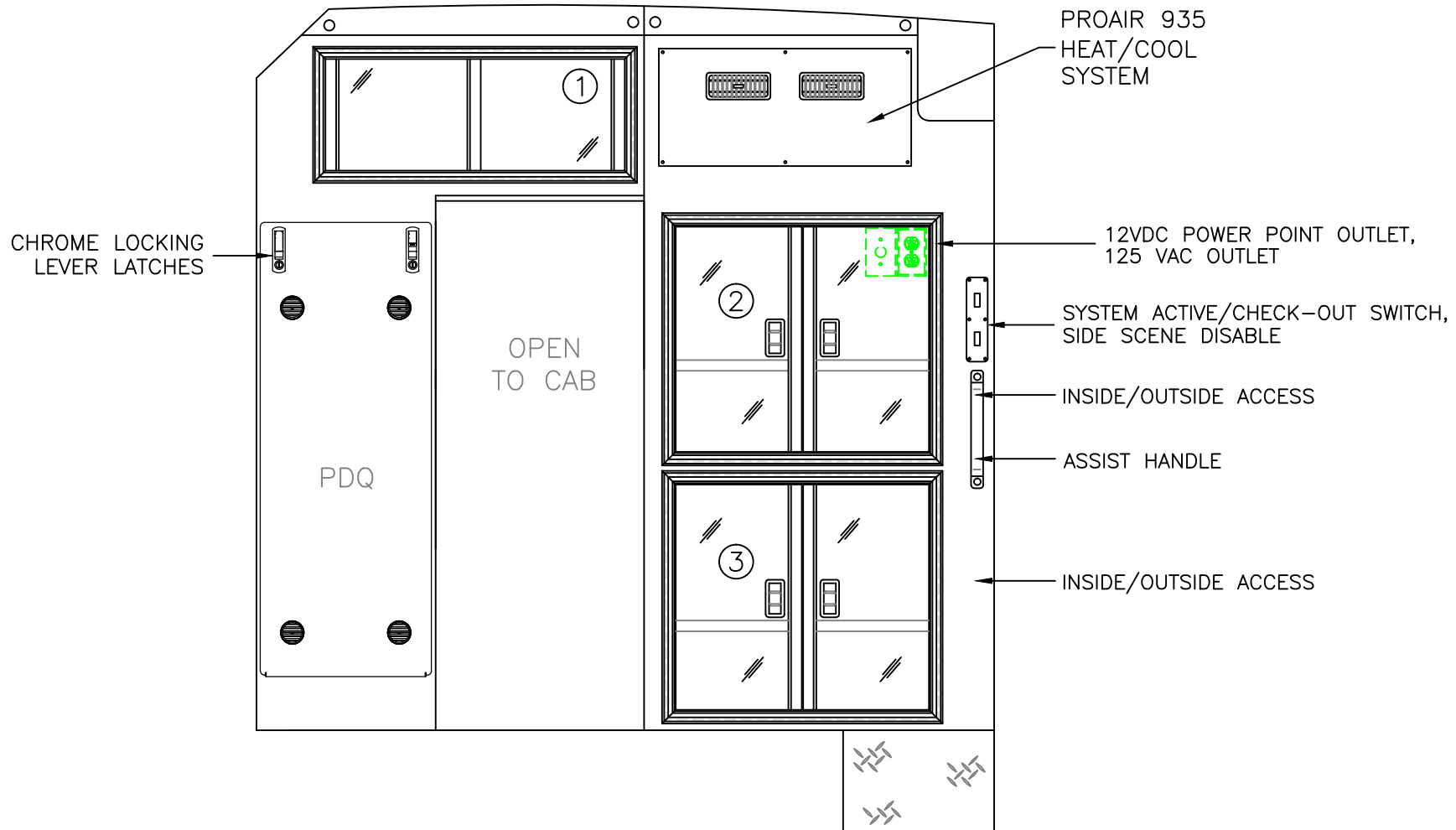


2019 CURBSIDE INTERIOR VIEW
 EXPRESS-III

DATE:
 8-3-18

DWG. AAB | REV. NR

DRAWING NO.
 EXPRESS-6



COMPARTMENT

#1 DOOR OPENING: 10.50h x 28.00w
 INSIDE DIMS: 12.25h x 29.75w x 6.50d
 SLIDING POLYCARBONATE DOORS
 TOTAL CABINET WEIGHT RATING = 20 lbs.

#2/#3 OPENING: 21.25h x 23.75w
 INSIDE DIMS: 23.00h x 31.25w x 13.25d
 (1) ADJUSTABLE SHELF PER CABINET
 HINGED POLYCARBONATE DOORS WITH FULL LENGTH HANDLES
 CENTER SQUEEZE LATCHES
 TOTAL CABINET WEIGHT RATING = 60 lbs. EACH

CABINETS TO BE ALUMINUM

THIS DRAWING IS FOR REPRESENTATIONAL PURPOSES ONLY. DETAILS ARE CONCEPTUAL AND ARE SUBJECT TO CHANGE DURING DESIGN AND CONSTRUCTION
 DIMENSIONS ARE APPROXIMATE UNLESS NOTED OTHERWISE TO MEET A SPECIFIC CUSTOMER NEED.

BRAUN
EXPRESS



2019 PARTITION INTERIOR VIEW
EXPRESS-III

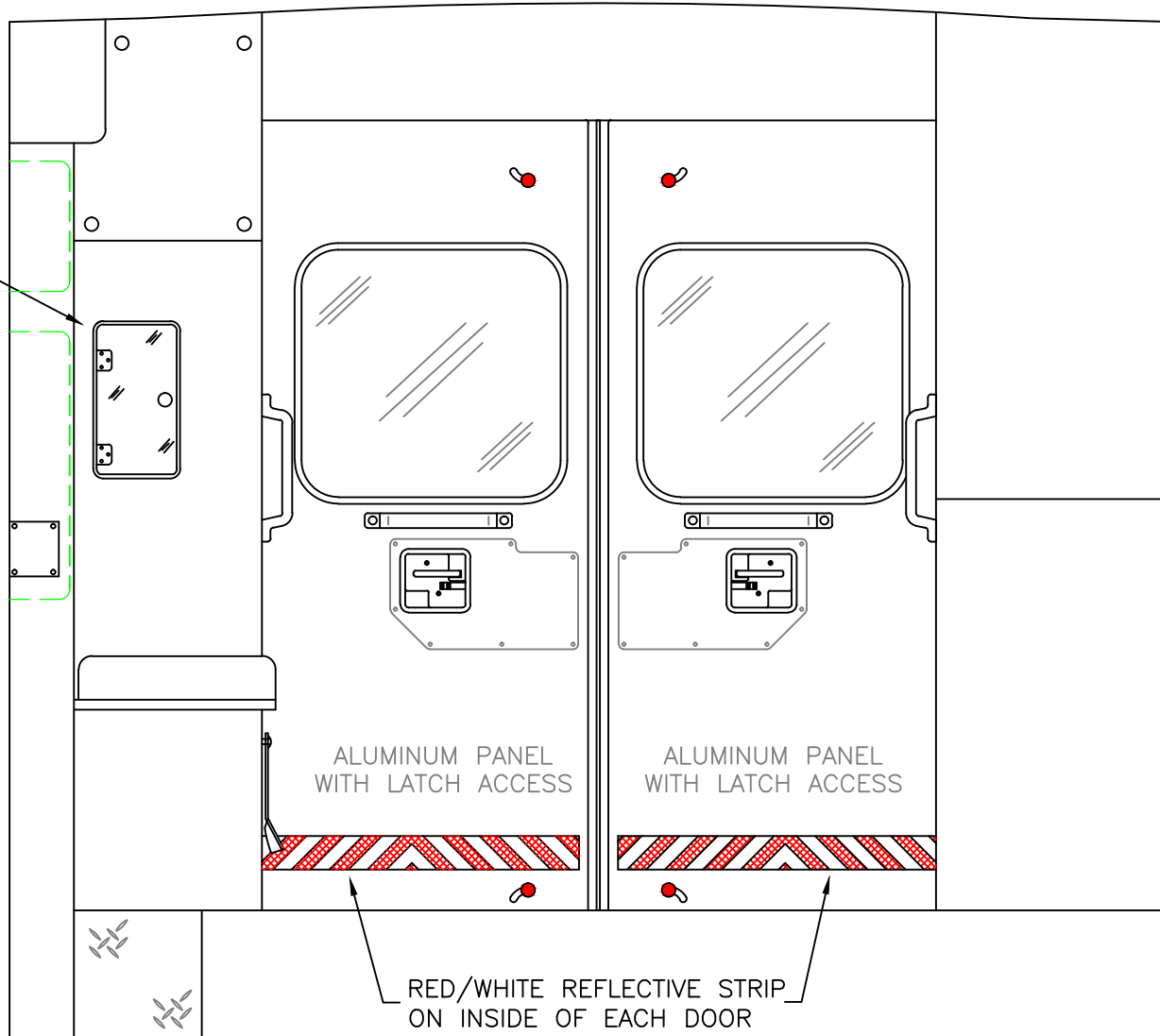
DATE:
8-3-18

DWG. AAB REV. NR

DRAWING NO.

EXPRESS-7

OXYGEN ACCESS



THIS DRAWING IS FOR REPRESENTATIONAL PURPOSES ONLY. DETAILS ARE CONCEPTUAL AND ARE SUBJECT TO CHANGE DURING DESIGN AND CONSTRUCTION DIMENSIONS ARE APPROXIMATE UNLESS NOTED OTHERWISE TO MEET A SPECIFIC CUSTOMER NEED.

BRAUN
EXPRESS



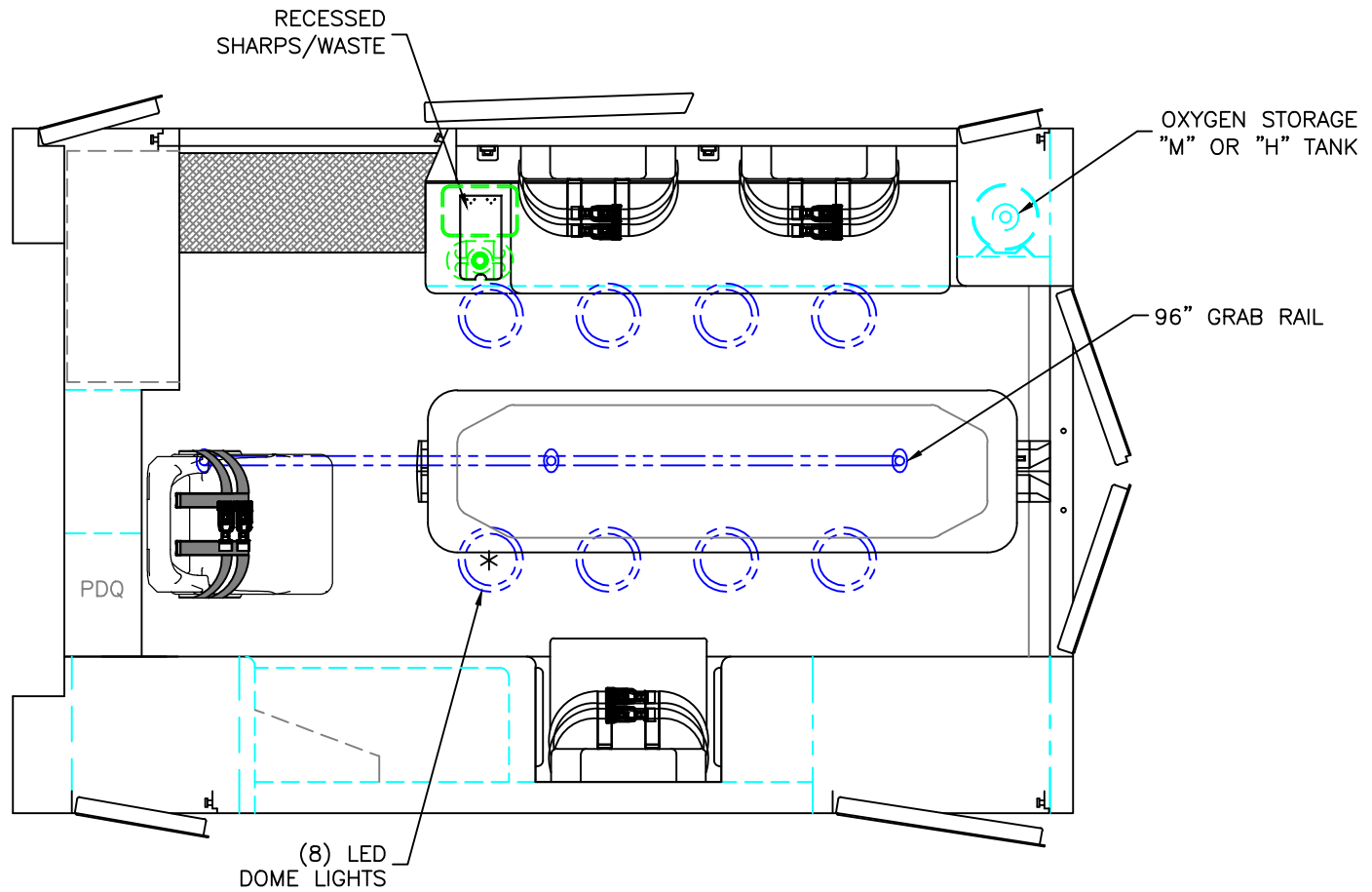
2019 REAR INTERIOR VIEW
EXPRESS-III

DATE:
8-3-18

DWG. AAB REV. NR

DRAWING NO.

EXPRESS-8



* (1) ANTENNA BASE LOCATED OUTBOARD OF DOME LIGHT WITH COAX SERVICE LOOP

86" FERNO STAT-TRAC CENTER MOUNT COT HARDWARE

HEAD ROOM = 68"
 OVERALL WIDTH WITH RUB
 RAILS & FENDERETTES = 95"
 MODULE LENGTH = 144"

THIS DRAWING IS FOR REPRESENTATIONAL PURPOSES ONLY. DETAILS ARE CONCEPTUAL AND ARE SUBJECT TO CHANGE DURING DESIGN AND CONSTRUCTION
 DIMENSIONS ARE APPROXIMATE UNLESS NOTED OTHERWISE TO MEET A SPECIFIC CUSTOMER NEED.

BRAUN
 EXPRESS



2019 FLOOR VIEW
 EXPRESS-III

DATE:
 8-3-18
 DWG.
 AAB

REV.
 NR

DRAWING NO.
 EXPRESS-9