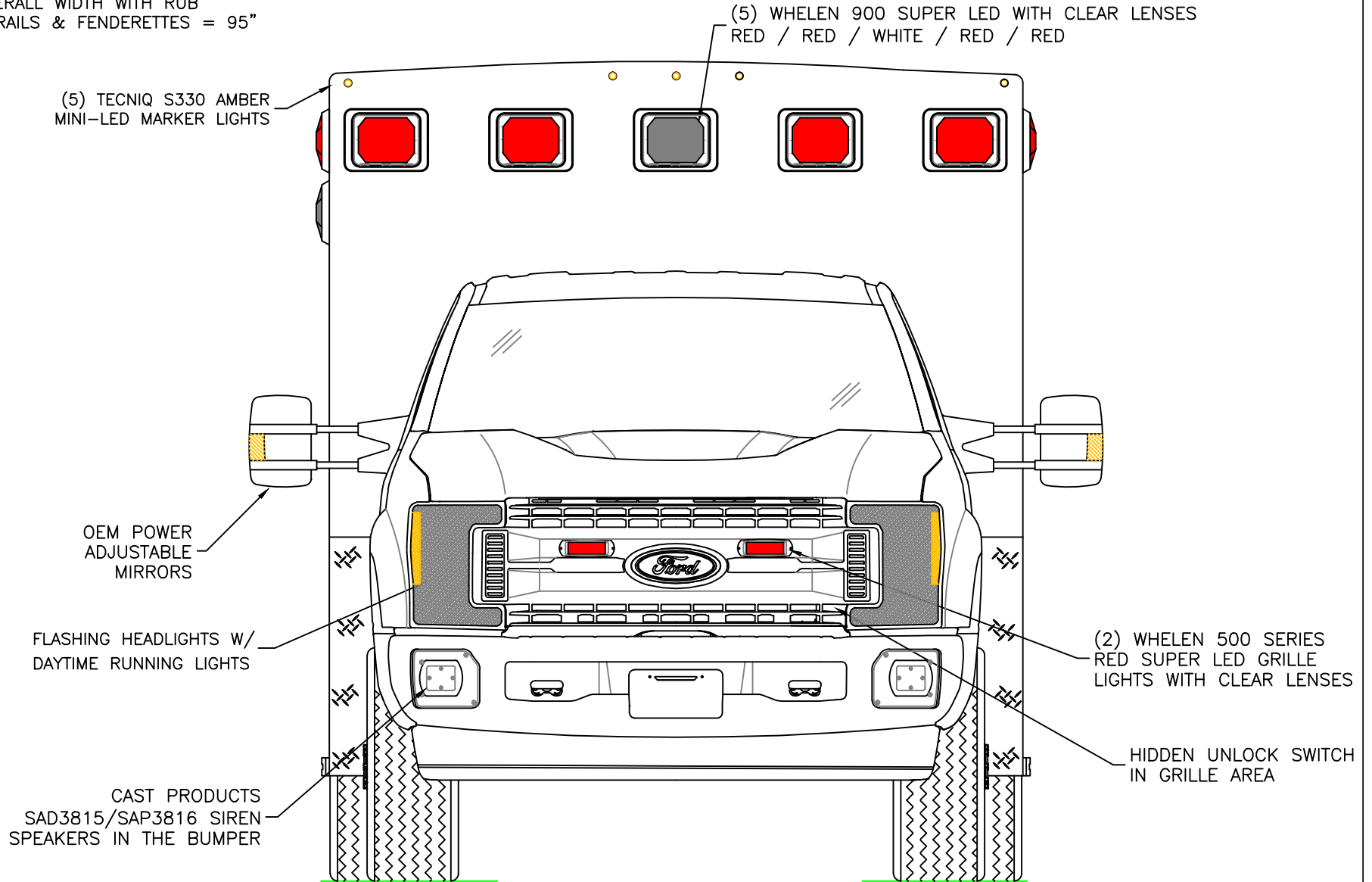


DIMENSIONS FOR OVERALL HEIGHT AND LENGTH ARE APPROXIMATE
 OVERALL HEIGHT = 109"
 OVERALL WIDTH WITH RUB
 RAILS & FENDERETTES = 95"



THIS DRAWING IS FOR REPRESENTATIONAL PURPOSES ONLY. DETAILS ARE CONCEPTUAL AND ARE SUBJECT TO CHANGE DURING DESIGN AND CONSTRUCTION
 DIMENSIONS ARE APPROXIMATE UNLESS NOTED OTHERWISE TO MEET A SPECIFIC CUSTOMER NEED.

BRAUN
 EXPRESS PLUS



2019 FRONT EXTERIOR VIEW
 EXPRESS PLUS / FORD F350 CHASSIS

DATE:
 8-3-18

DRAWING NO.

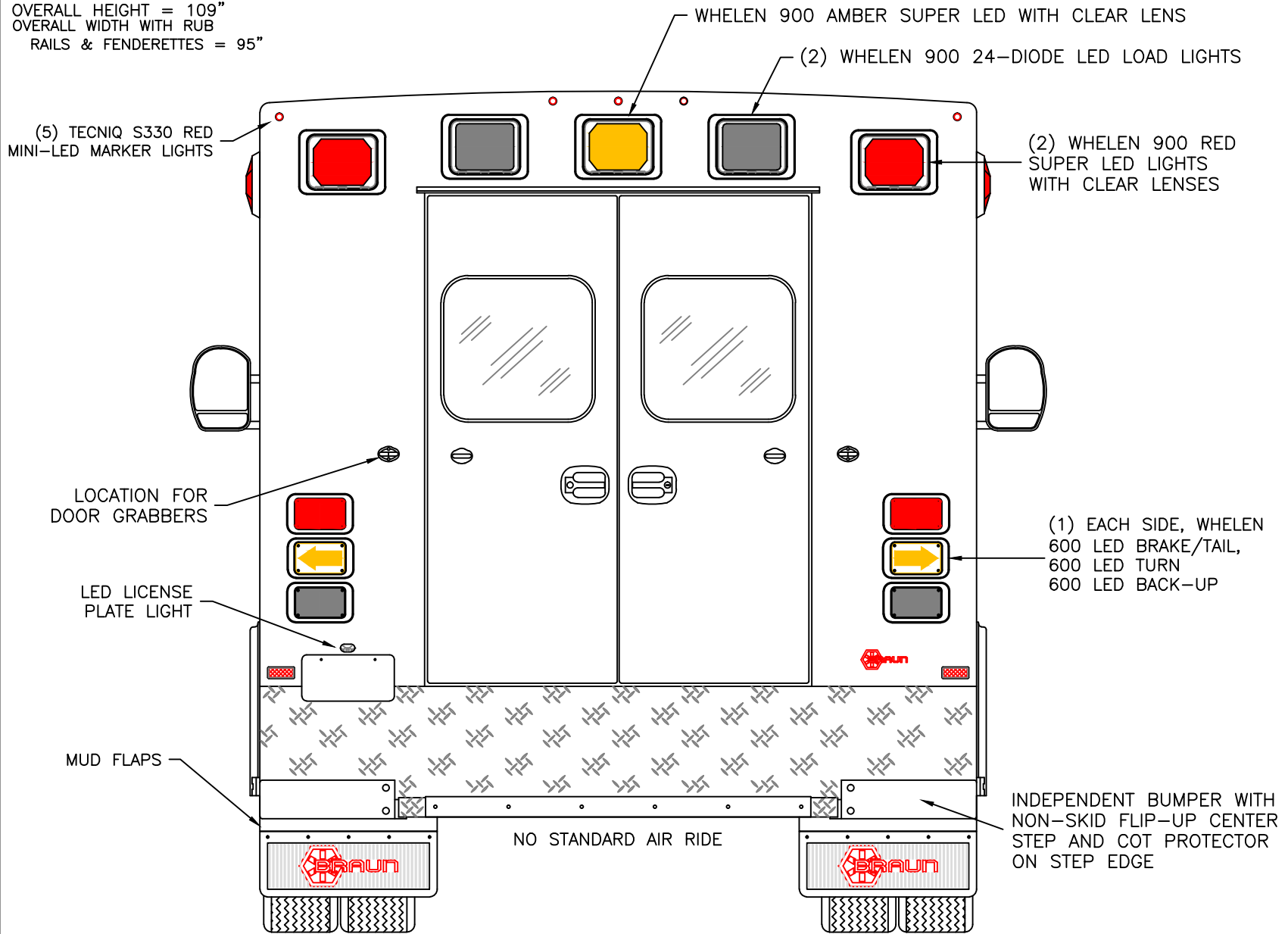
DWG. AAB
 REV. NR

EXPRESSPLUS-1

APPROVAL SIGNATURE:

DATE:

DIMENSIONS FOR OVERALL HEIGHT AND LENGTH ARE APPROXIMATE
 OVERALL HEIGHT = 109"
 OVERALL WIDTH WITH RUB
 RAILS & FENDERETTES = 95"



THIS DRAWING IS FOR REPRESENTATIONAL PURPOSES ONLY. DETAILS ARE CONCEPTUAL AND ARE SUBJECT TO CHANGE DURING DESIGN AND CONSTRUCTION
 DIMENSIONS ARE APPROXIMATE UNLESS NOTED OTHERWISE TO MEET A SPECIFIC CUSTOMER NEED.

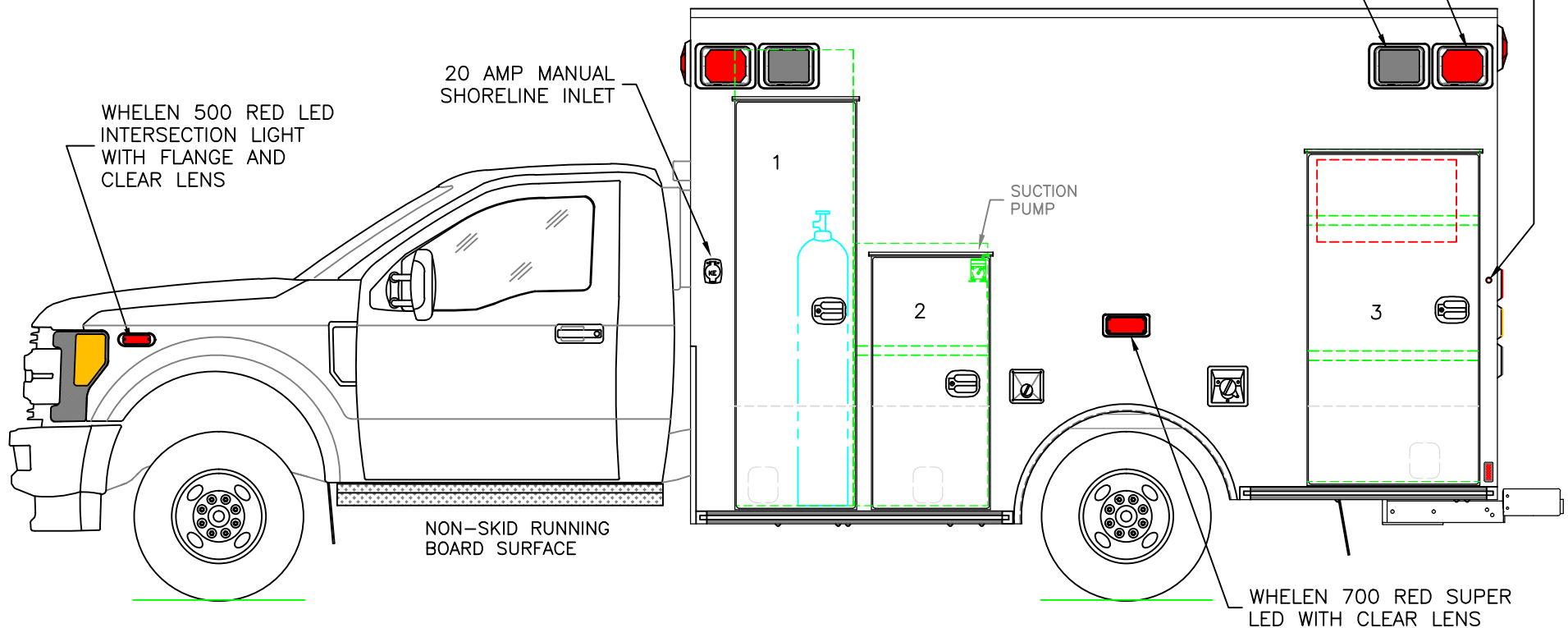
| | | | | | |
|-------------------------------|--|---|--|--------------------|--------------------------------------|
| <p>BRAUN EXPRESS PLUS</p> | | <p>2019 REAR EXTERIOR VIEW EXPRESS PLUS</p> | <p>DATE: 8-3-18 DWG. AAB</p> | <p>REV. NR</p> | <p>DRAWING NO. EXPRESSPLUS-2</p> |
|-------------------------------|--|---|--|--------------------|--------------------------------------|

DIMENSIONS FOR OVERALL HEIGHT AND LENGTH ARE APPROXIMATE
 OVERALL HEIGHT = 109"
 OVERALL LENGTH = 288"
 MODULE LENGTH = 150"

TECNIQ S330 RED MINI-LED MARKER LIGHT TO ALSO FLASH WITH TURN SIGNAL

(2) WHELEN 900 RED SUPER LED WARNING LIGHTS WITH CLEAR LENSES

(2) WHELEN 900 24-DIODE LED SCENE LIGHTS



WHELEN 500 RED LED INTERSECTION LIGHT WITH FLANGE AND CLEAR LENS

20 AMP MANUAL SHORELINE INLET

SUCTION PUMP

NON-SKID RUNNING BOARD SURFACE

WHELEN 700 RED SUPER LED WITH CLEAR LENS

COMPARTMENT O.S.S #1

CLEAR OPENING: 74.50h x 18.50w
 INSIDE DIM'S.: 84.75h x 22.00w x 18.50d
 OXYGEN STORAGE COMPARTMENT

O.S.S #2

CLEAR OPENING: 45.50h x 19.00w
 INSIDE DIM'S.: 48.75h x 24.75w x 18.50d
 (1) ADJUSTABLE SHELF

O.S.S #3

CLEAR OPENING: 60.25h x 28.50w
 INSIDE DIM'S.: 61.75h x 32.00w x 18.50d
 (2) ADJUSTABLE SHELVES
 INSIDE/OUTSIDE ACCESS

THIS DRAWING IS FOR REPRESENTATIONAL PURPOSES ONLY. DETAILS ARE CONCEPTUAL AND ARE SUBJECT TO CHANGE DURING DESIGN AND CONSTRUCTION
 DIMENSIONS ARE APPROXIMATE UNLESS NOTED OTHERWISE TO MEET A SPECIFIC CUSTOMER NEED.

BRAUN
 EXPRESS PLUS



2019 STREETSIDE EXTERIOR VIEW
 EXPRESS PLUS / FORD F350 CHASSIS

DATE:
 8-3-18
 DWG. AAB
 REV. NR

DRAWING NO.
 EXPRESSPLUS-3

TECNIQ S330 RED MINI-LED MARKER LIGHT TO ALSO FLASH WITH TURN SIGNAL

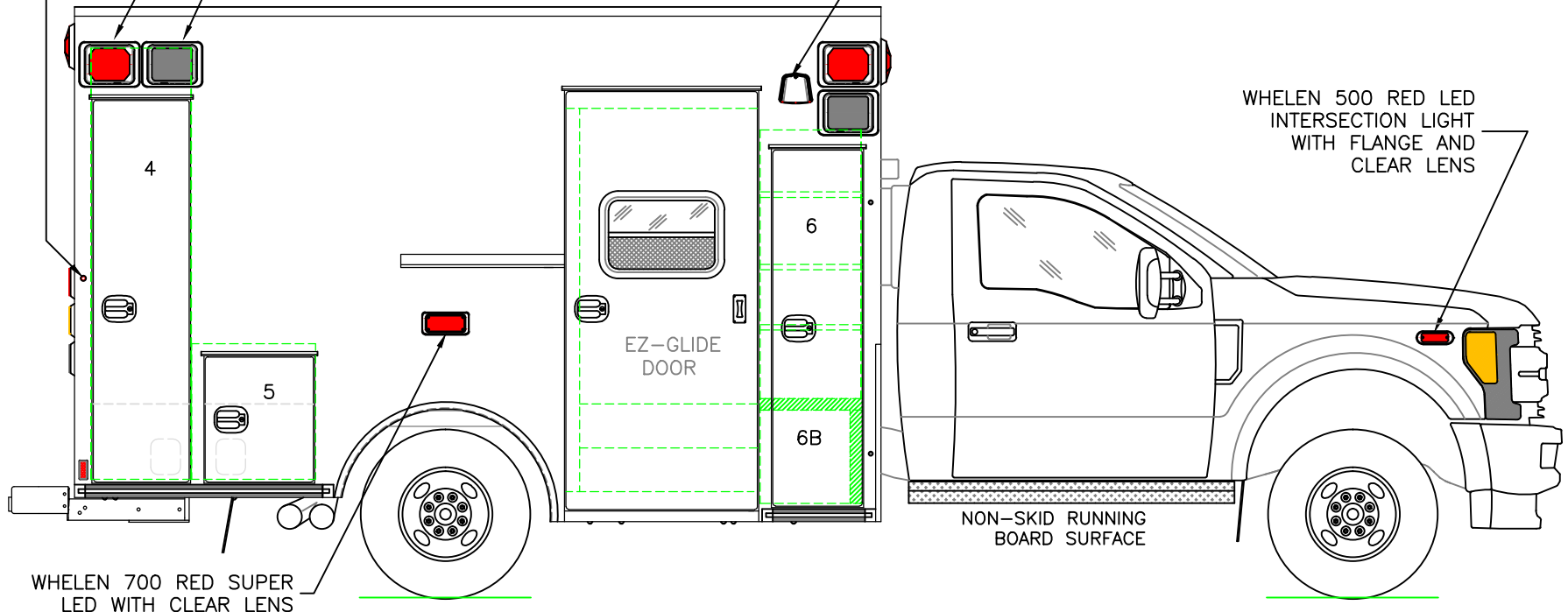
(2) WHELEN 900 RED SUPER LED WARNING LIGHTS WITH CLEAR LENSES

(2) WHELEN 900 24-DIODE LED SCENE LIGHTS

DIMENSIONS FOR OVERALL HEIGHT AND LENGTH ARE APPROXIMATE
 OVERALL HEIGHT = 109"
 OVERALL LENGTH = 288"
 MODULE LENGTH = 150"

EXHAUST VENT

WHELEN 500 RED LED INTERSECTION LIGHT WITH FLANGE AND CLEAR LENS



WHELEN 700 RED SUPER LED WITH CLEAR LENS

COMPARTMENT

O.S.S #4

CLEAR OPENING: 70.00h x 15.00w
 INSIDE DIM'S.: 80.25h x 18.50w x 18.50d
 BACKBOARD/SCOOP STORAGE

O.S.S #5

CLEAR OPENING: 22.25h x 17.00w
 INSIDE DIM'S.: 25.25h x 23.00w x 18.50d
 MISC. STORAGE COMPARTMENT

O.S.S #6

CLEAR OPENING: 65.25h x 13.50w
 INSIDE DIM'S. 6A: SEE PARTITION INTERIOR VIEW
 INSIDE/OUTSIDE STORAGE WITH (3) ADJUSTABLE SHELVES
 INSIDE DIM'S. 6B: 17.25h x 16.75w x 16.75d

THIS DRAWING IS FOR REPRESENTATIONAL PURPOSES ONLY. DETAILS ARE CONCEPTUAL AND ARE SUBJECT TO CHANGE DURING DESIGN AND CONSTRUCTION DIMENSIONS ARE APPROXIMATE UNLESS NOTED OTHERWISE TO MEET A SPECIFIC CUSTOMER NEED.

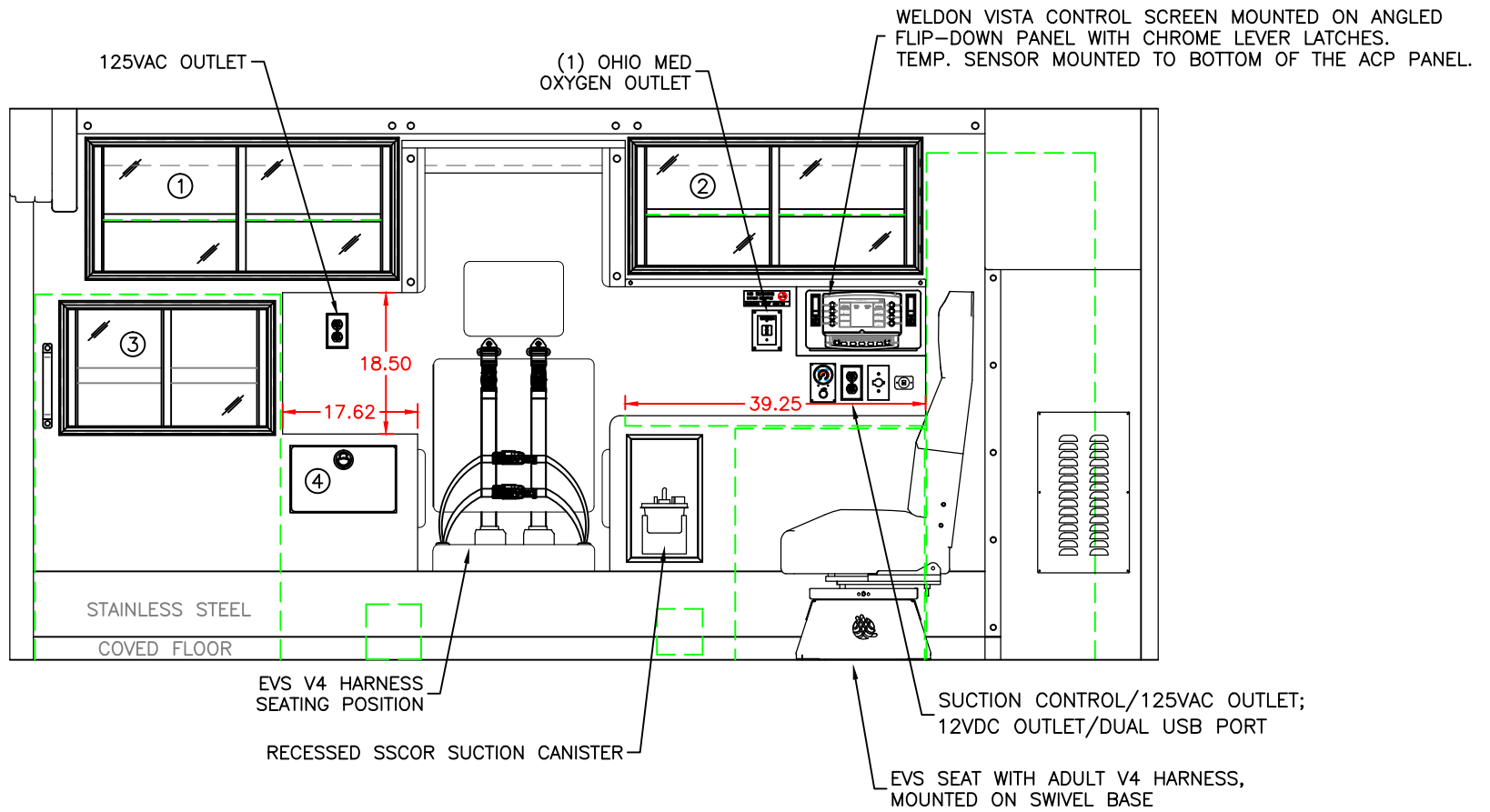
BRAUN
 EXPRESS PLUS



2019 CURBSIDE EXTERIOR VIEW
 EXPRESS PLUS / FORD F350 CHASSIS

DATE:
 8-3-18
 DWG.
 AAB

DRAWING NO.
 EXPRESSPLUS-4
 REV.
 NR



COMPARTMENT

#1 DOOR OPENING: 16.25h x 38.50w
 INSIDE DIMS: 17.75h x 40.25w x 16.25d
 (1) ADJUSTABLE SHELF
 SLIDING POLYCARBONATE DOORS
 TOTAL CABINET WEIGHT RATING = 25 lbs.

#2 DOOR OPENING: 15.50h x 36.00w
 INSIDE DIMS: 17.00h x 37.75w x 16.25d
 (1) ADJUSTABLE SHELF
 SLIDING POLYCARBONATE DOORS
 TOTAL CABINET WEIGHT RATING = 25 lbs.

#3 DOOR OPENING: 15.25h x 26.00w
 INSIDE DIMS: OSS #3
 INSIDE/OUTSIDE ACCESS
 SLIDING POLYCARBONATE DOORS
 TOTAL CABINET WEIGHT RATING = 25 lbs.

#4 PULL-OUT DRAWER
 INSIDE DIMS: 7.50h x 11.75w x 15.75d
 LOCKING STAINLESS STEEL FLUSH PULL LATCH
 TOTAL DRAWER WEIGHT RATING = 10 lbs.

CABINETS TO BE ALUMINUM

THIS DRAWING IS FOR REPRESENTATIONAL PURPOSES ONLY. DETAILS ARE CONCEPTUAL AND ARE SUBJECT TO CHANGE DURING DESIGN AND CONSTRUCTION DIMENSIONS ARE APPROXIMATE UNLESS NOTED OTHERWISE TO MEET A SPECIFIC CUSTOMER NEED.

BRAUN
 EXPRESS PLUS



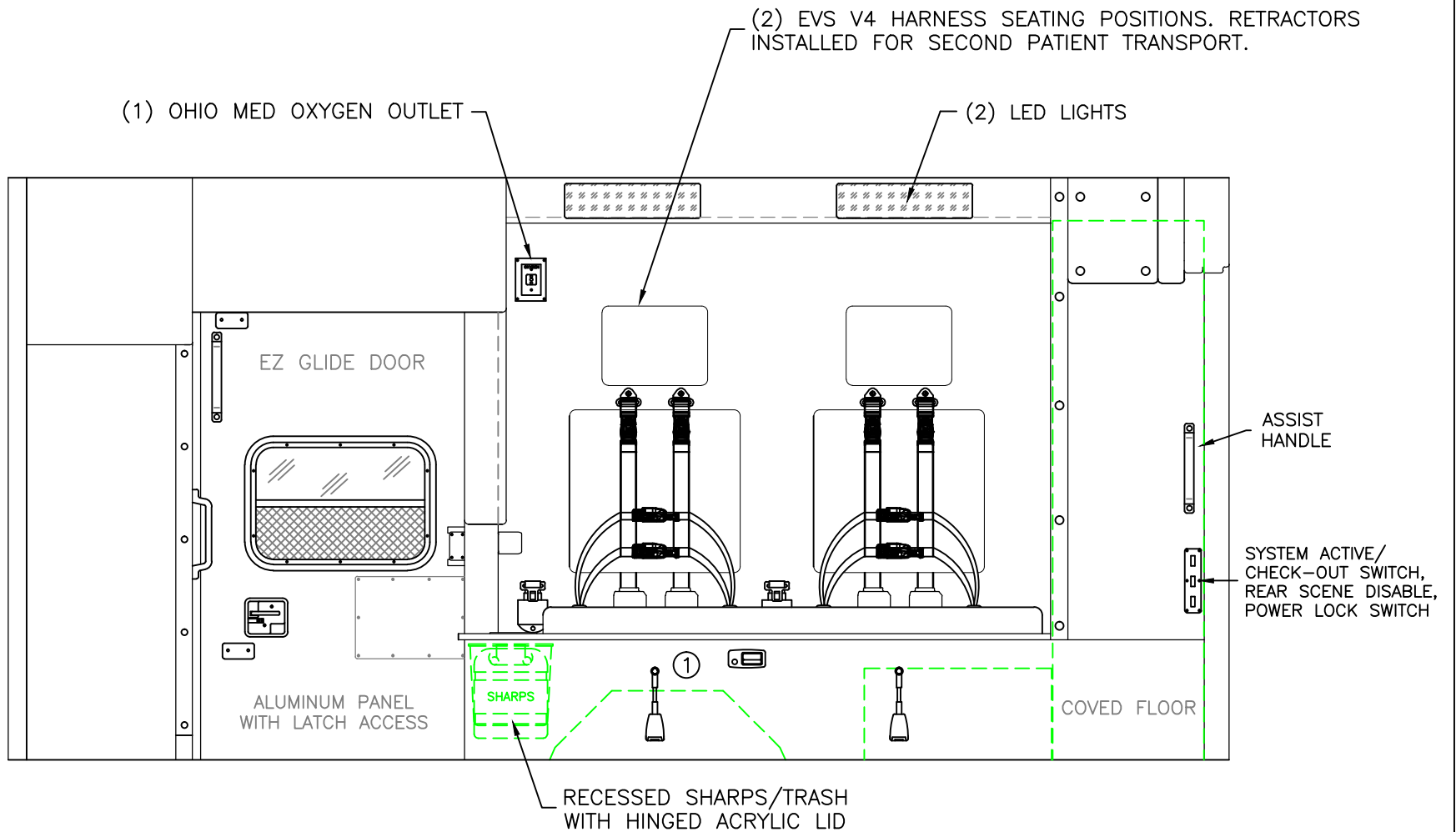
2019 STREETSIDE INTERIOR VIEW
 EXPRESS PLUS

DATE:
 8-3-18

DWG. AAB REV. NR

DRAWING NO.

EXPRESSPLUS-5



#1 INSIDE DIM'S.: 14.50h x 48.00w x 18.75d

CABINETS TO BE ALUMINUM

THIS DRAWING IS FOR REPRESENTATIONAL PURPOSES ONLY. DETAILS ARE CONCEPTUAL AND ARE SUBJECT TO CHANGE DURING DESIGN AND CONSTRUCTION DIMENSIONS ARE APPROXIMATE UNLESS NOTED OTHERWISE TO MEET A SPECIFIC CUSTOMER NEED.

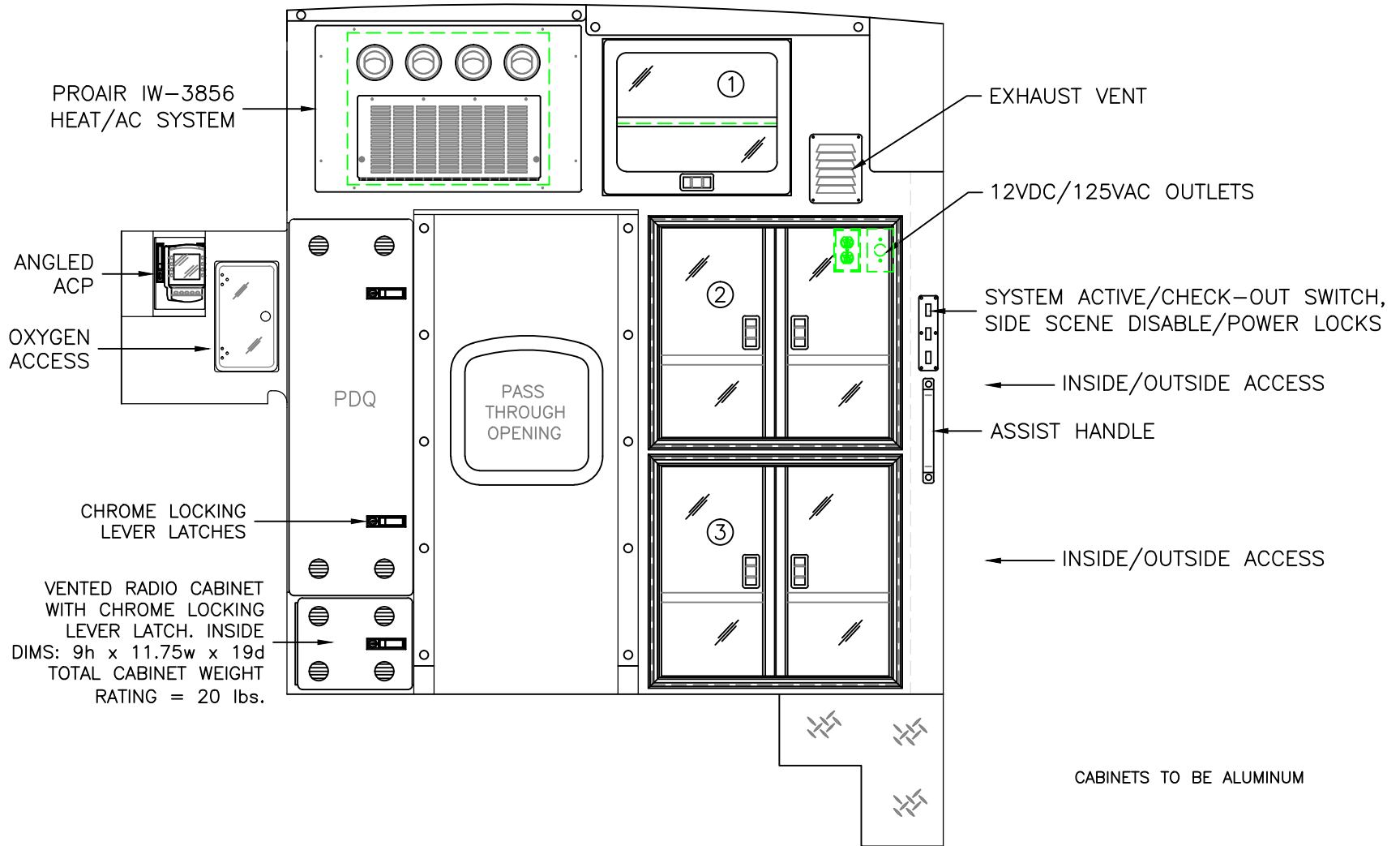
BRAUN
EXPRESS PLUS



2019 CURBSIDE INTERIOR VIEW
EXPRESS PLUS

DATE:
8-3-18
DWG.
AAB

REV.
NR
DRAWING NO.
EXPRESSPLUS-6



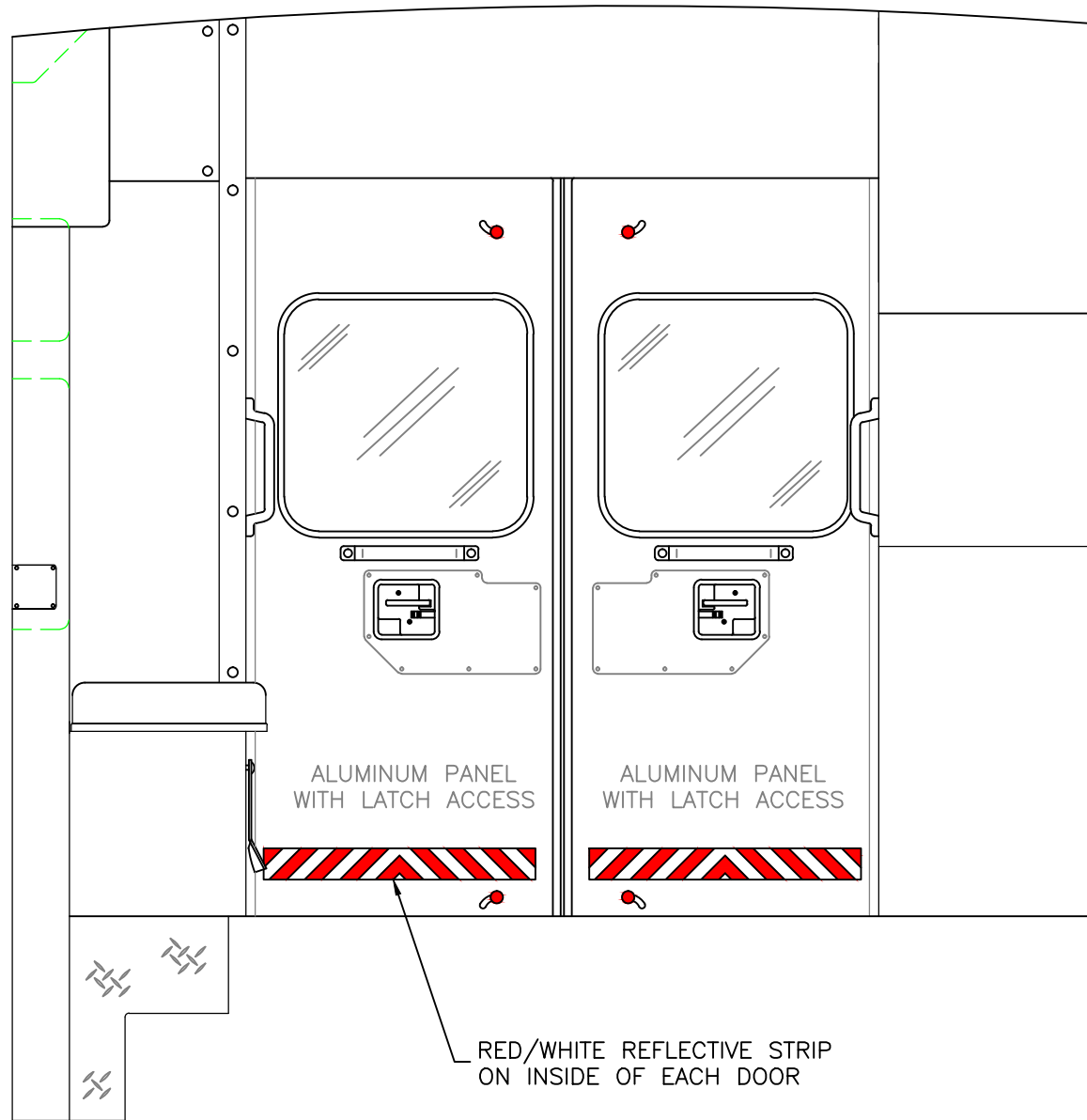
CABINETS TO BE ALUMINUM

COMPARTMENT

#1 DOOR OPENING: 16.50h x 20.00w
 INSIDE DIMS: 16.50h x 20.00w x 16.00d
 HINGED ALUMINUM DOOR WITH POLYCARBONATE INSERT
 CENTER SQUEEZE LATCH
 (1) ADJUSTABLE SHELF
 TOTAL CABINET WEIGHT RATING = 25 lbs.

#2/#3 DOOR OPENING: 22.25h x 24.25w
 INSIDE DIMS: 24.00h x 30.25w x 17.75d
 HINGED POLYCARBONATE DOORS WITH FULL LENGTH HANDLES
 CENTER SQUEEZE LATCHES
 (1) ADJUSTABLE SHELF PER CABINET
 TOTAL CABINET WEIGHT RATING = 60 lbs. EACH

THIS DRAWING IS FOR REPRESENTATIONAL PURPOSES ONLY. DETAILS ARE CONCEPTUAL AND ARE SUBJECT TO CHANGE DURING DESIGN AND CONSTRUCTION DIMENSIONS ARE APPROXIMATE UNLESS NOTED OTHERWISE TO MEET A SPECIFIC CUSTOMER NEED.



ALUMINUM PANEL WITH LATCH ACCESS

ALUMINUM PANEL WITH LATCH ACCESS

RED/WHITE REFLECTIVE STRIP ON INSIDE OF EACH DOOR

THIS DRAWING IS FOR REPRESENTATIONAL PURPOSES ONLY. DETAILS ARE CONCEPTUAL AND ARE SUBJECT TO CHANGE DURING DESIGN AND CONSTRUCTION DIMENSIONS ARE APPROXIMATE UNLESS NOTED OTHERWISE TO MEET A SPECIFIC CUSTOMER NEED.

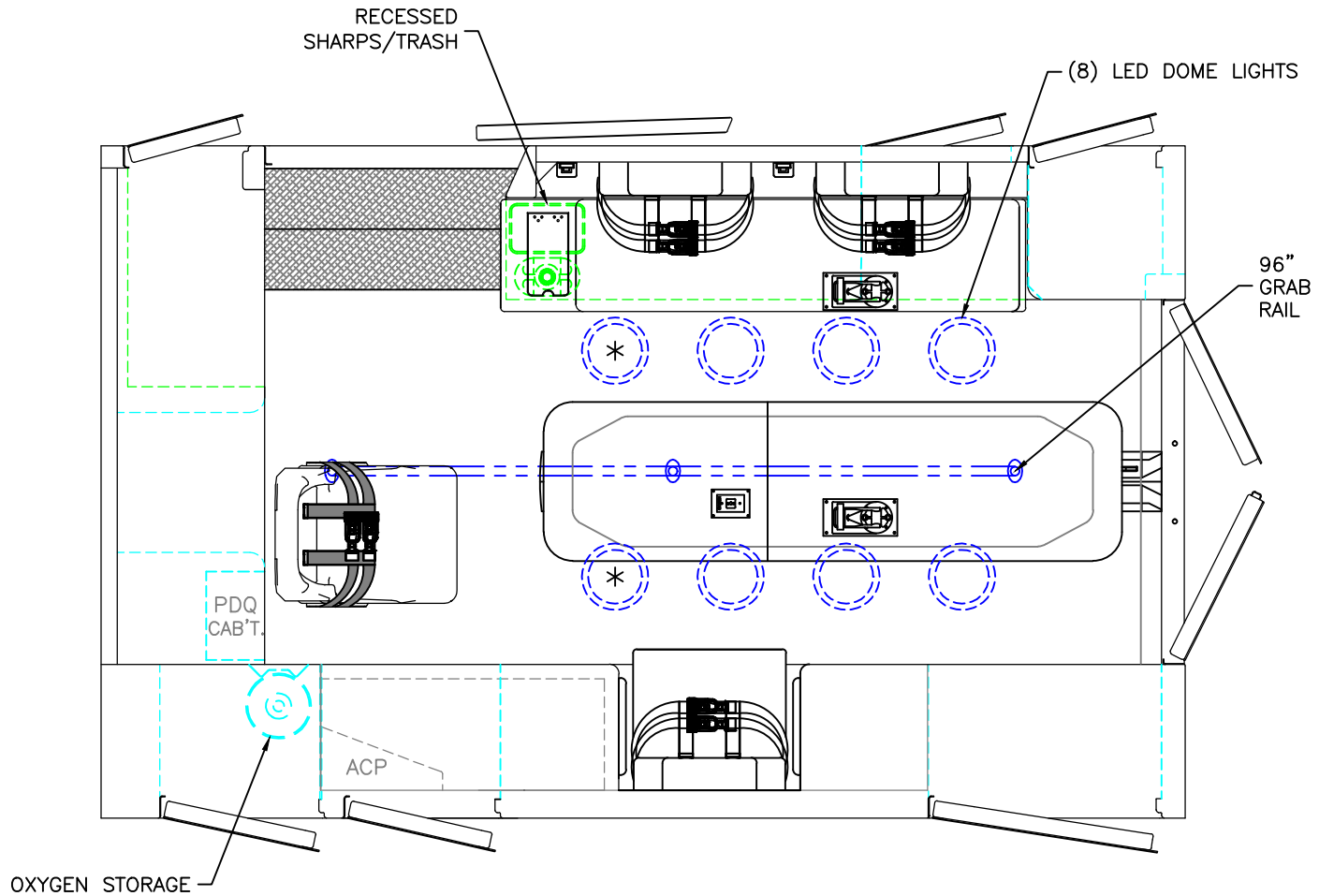
BRAUN
EXPRESS PLUS


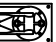


2019 REAR INTERIOR VIEW
EXPRESS PLUS

| | |
|-------|--------|
| DATE: | 8-3-18 |
| DWG. | AAB NR |

| | |
|-------------|---------------|
| DRAWING NO. | EXPRESSPLUS-8 |
|-------------|---------------|



-  = (1) CEILING OXYGEN OUTLET
-  = (2) RECESSED CEILING IV HANGER LOCATIONS
- * (2) ANTENNA BASES LOCATED OUTBOARD OF DOME LIGHTS WITH COAX SERVICE LOOP
- 86" FERNO STAT-TRAC CENTER MOUNT COT HARDWARE

MODULE WIDTH = 93"
 MODULE LENGTH = 150"
 MODULE HEAD ROOM = 72"

THIS DRAWING IS FOR REPRESENTATIONAL PURPOSES ONLY. DETAILS ARE CONCEPTUAL AND ARE SUBJECT TO CHANGE DURING DESIGN AND CONSTRUCTION DIMENSIONS ARE APPROXIMATE UNLESS NOTED OTHERWISE TO MEET A SPECIFIC CUSTOMER NEED.

BRAUN
 EXPRESS PLUS



2019 FLOOR INTERIOR VIEW
 EXPRESS PLUS

| | |
|-------|--------|
| DATE: | 8-3-18 |
| DWG. | AAB |
| REV. | NR |

| | |
|-------------|---------------|
| DRAWING NO. | EXPRESSPLUS-9 |
|-------------|---------------|